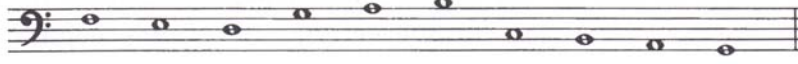
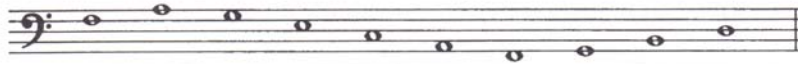
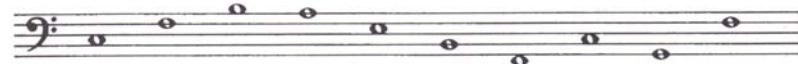


1-3

Identify by letter name the following pitches in the bass clef.

1. 
_ _ _ _ _

2. 
_ _ _ _ _

3. 
_ _ _ _ _

1-4

Identify by letter name the pitches of the following songs.

"Nine Hundred Miles"

1. 
_ _ _ _ _


_ _ _ _ _


_ _ _ _ _

"Skip to My Lou"

2. 
_ _ _ _ _


_ _ _ _ _

"Mexican Folk Song"

3. 
_ _ _ _ _


_ _ _ _ _

1-5

Identify by letter name the following pitches on the great staff.

1.

A musical staff with two staves (treble and bass clef) containing five notes each. The notes are: Treble clef (G4, A4, B4, C5, D5); Bass clef (F3, G3, A3, B3, C4). Below the staves is a dashed line for labeling.

2.

A musical staff with two staves (treble and bass clef) containing five notes each. The notes are: Treble clef (C5, D5, E5, F5, G5); Bass clef (B2, C3, D3, E3, F3). Below the staves is a dashed line for labeling.

3.

A musical staff with two staves (treble and bass clef) containing five notes each. The notes are: Treble clef (C5, D5, E5, F5, G5); Bass clef (B2, C3, D3, E3, F3). Below the staves is a dashed line for labeling.

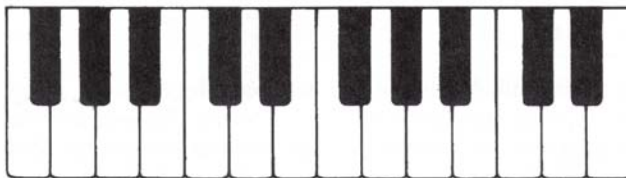
1-6

Locate and write each given pitch on the keyboard. Remember that each pitch will occur in more than one place, since these keyboards are greater than an octave. When you have written all the pitches, practice finding and playing them on the piano.

1. F, C, G, D, B

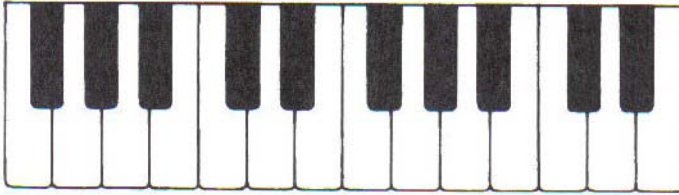


2. G, D, E, A, C



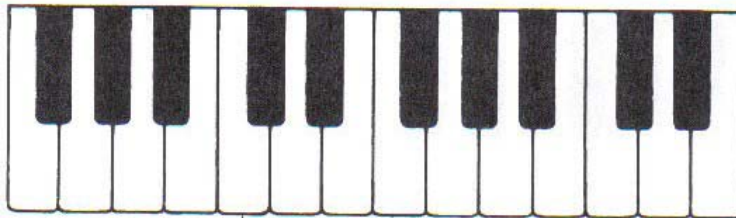
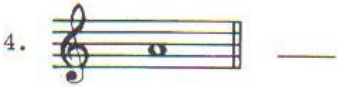
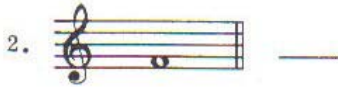
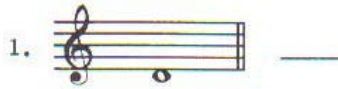
1-6 continued

3. A, E, B, F, D



1-7

Identify by letter name the pitches given. Then, write each pitch once on the key board that follows. Finally, find and play each of the pitches at the piano.

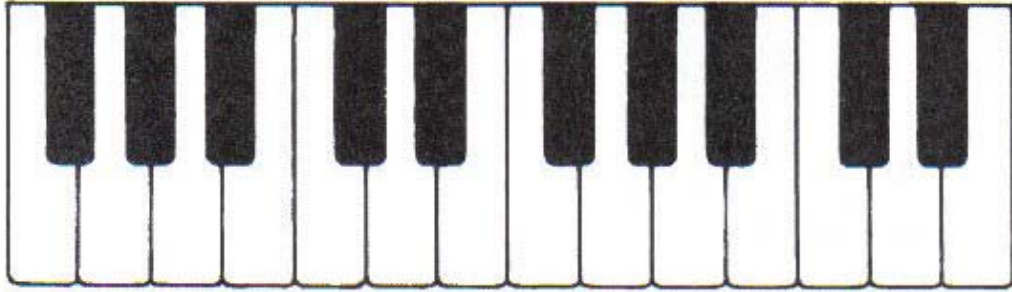


Middle C

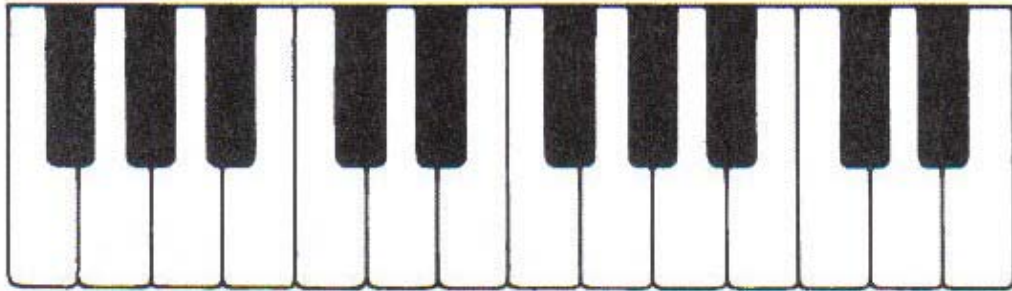
1-8

Locate the following pitches on the black keys of the keyboard by drawing a line from each pitch name to the appropriate places on the keyboard. Remember that each pitch will occur in more than one place, since these keyboards are greater than an octave. When you have located all the pitches, practice finding and playing them on the piano.

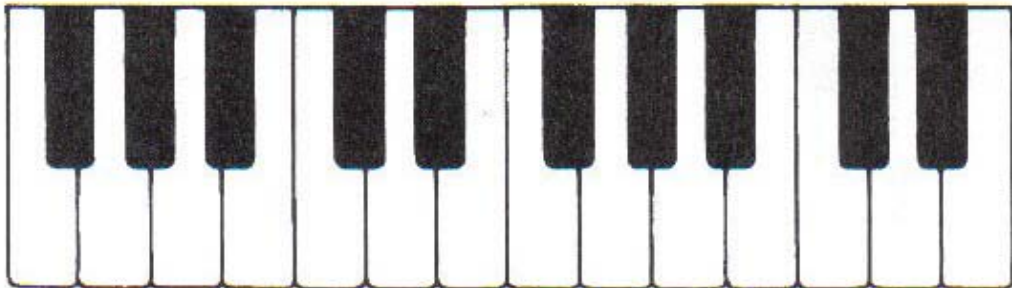
1. C[#], G^b, B^b



2. E^b, F[#], A^b



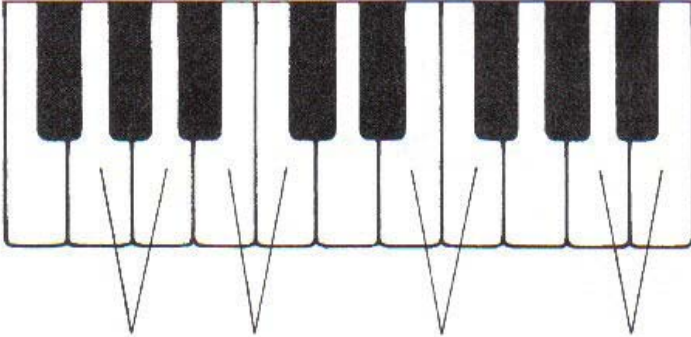
3. D^b, D[#], G[#]



1-9

On the following keyboards, identify each indicated interval as either a whole step or a half step. Use the letters *W* or *H* to indicate the interval and write them in the space provided.

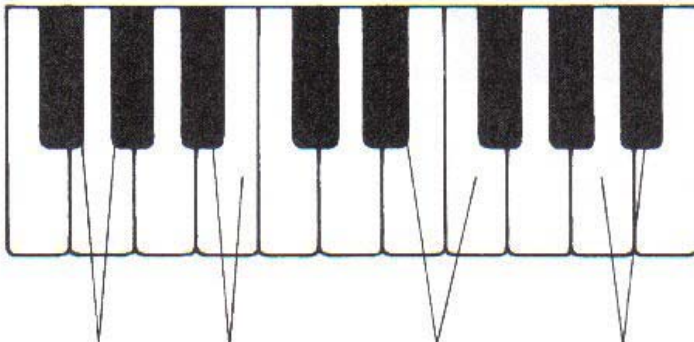
1.



A diagram of a piano keyboard showing four intervals indicated by lines connecting the following pairs of keys: (white, black), (black, white), (white, white), and (black, black). Below each pair is a horizontal line for the answer.

— — — —

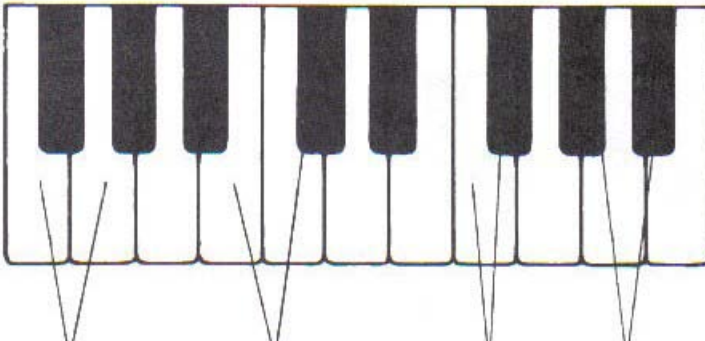
2.



A diagram of a piano keyboard showing four intervals indicated by lines connecting the following pairs of keys: (white, white), (black, black), (white, black), and (black, white). Below each pair is a horizontal line for the answer.

— — — —

3.



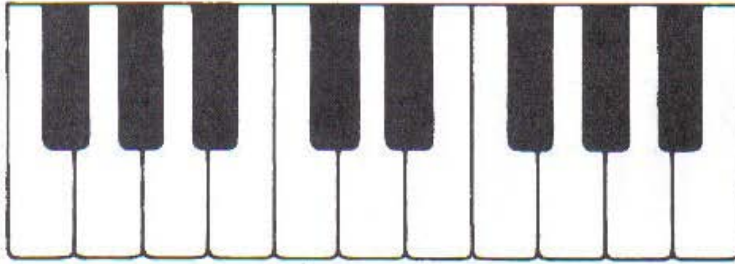
A diagram of a piano keyboard showing four intervals indicated by lines connecting the following pairs of keys: (white, white), (white, black), (black, white), and (black, black). Below each pair is a horizontal line for the answer.

— — — —

1-10

Locate the indicated pitches on the following keyboards by drawing a line from the written pitch to the key it represents. Then, play each of the pitches on the piano.

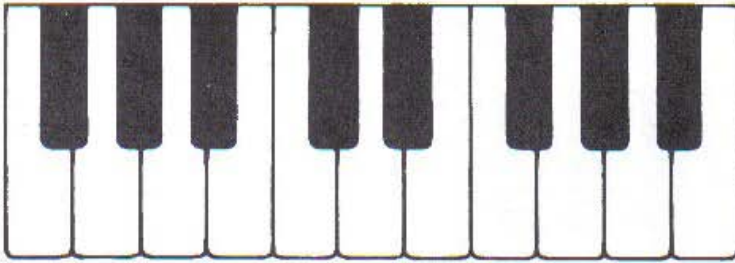
1.



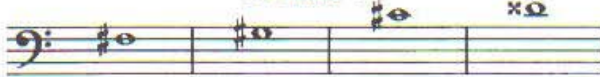
Middle C



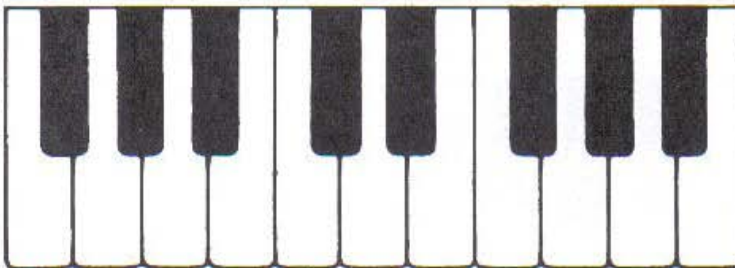
2.



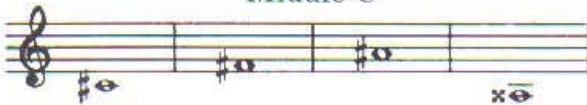
Middle C



3.

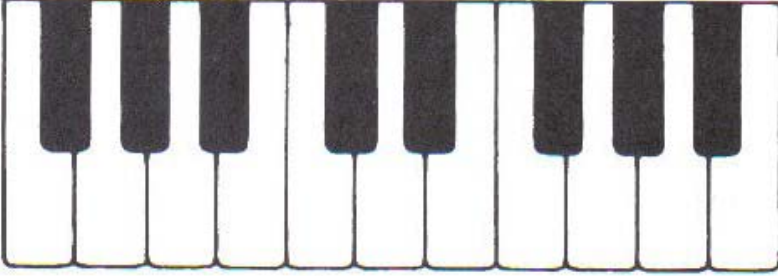


Middle C

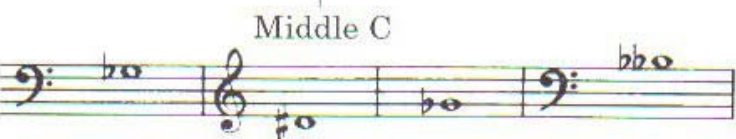


1-10 continued

4.

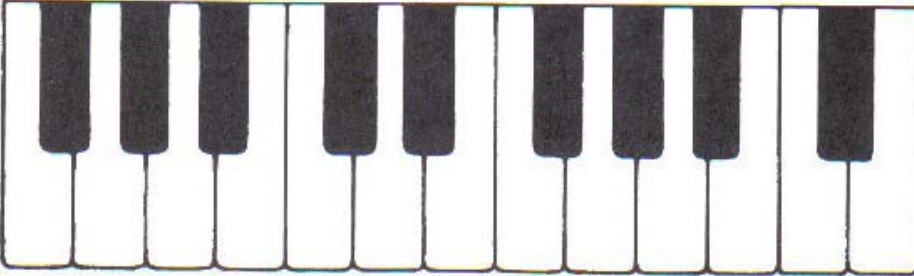


A diagram of a piano keyboard showing a sequence of notes: C4, C#4, D4, E4, F4, F#4, G4, G#4, A4, A#4, B4, and C5. The notes are represented by black and white keys.




Musical notation for exercise 4. It consists of two staves. The first staff is in bass clef and contains two notes: Bb4 and B4. The second staff is in treble clef and contains two notes: C5 and Bb4. A vertical line labeled "Middle C" points to the C5 note on the treble staff.

5.



A diagram of a piano keyboard showing a sequence of notes: C4, C#4, D4, E4, F4, F#4, G4, G#4, A4, A#4, B4, and C5. The notes are represented by black and white keys.



Musical notation for exercise 5. It consists of two staves. The first staff is in bass clef and contains two notes: Bb4 and B4. The second staff is in treble clef and contains two notes: C5 and Bb4. A vertical line labeled "Middle C" points to the C5 note on the treble staff.